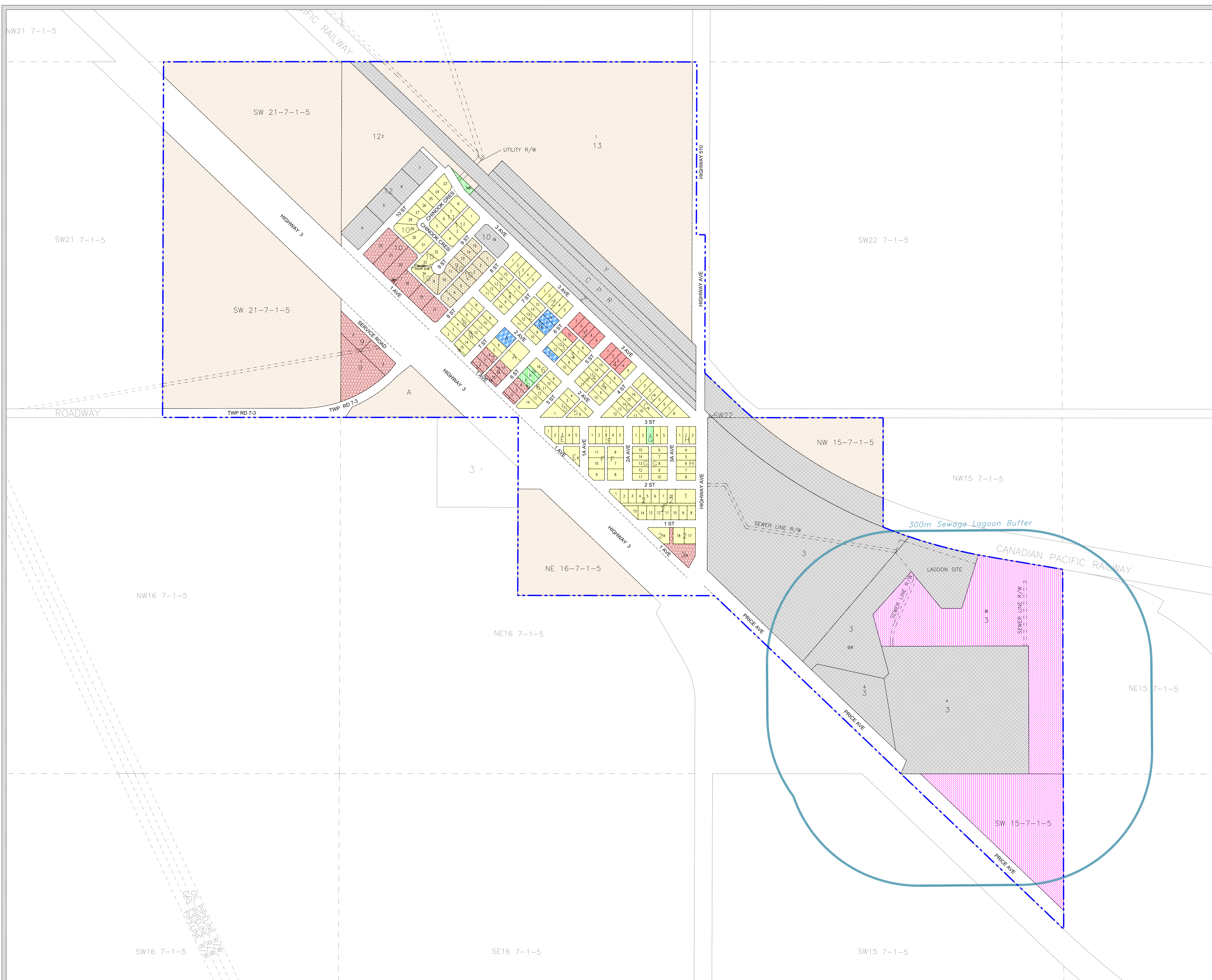


VILLAGE OF COWLEY
 Ptn's Of SW 15, NW 15, NE 16, SE 21
 All Of SW 21 In Twp 7, Rge 1, W5M

--- VILLAGE BOUNDARY



VILLAGE OF COWLEY
 LAND USE DISTRICTS
 BYLAW NO. 352
 DATE: SEPTEMBER 15, 1998
 AMENDED TO BYLAW NO. 370

- | | | |
|--|------------------------------------|-----|
| | General Residential | R1 |
| | Mobile Home Residential | R2 |
| | Downtown/Retail Commercial | C1 |
| | Highway And General Commercial | C2 |
| | General Industrial And Warehousing | I |
| | Parks And Open Space | POS |
| | Public And Institutional | PI |
| | Transitional/Urban Reserve | TUR |
| | Direct Control | DC |

MAP PREPARED BY:
 OLDMAN RIVER REGIONAL SERVICES COMMISSION
 3105 16th AVENUE NORTH, LETHBRIDGE, ALBERTA T1H 5E8
 TEL. 403-329-1344
 "NOT RESPONSIBLE FOR ERRORS OR OMISSIONS"

PLOT SCALE 1:4000

OLDMAN RIVER REGIONAL SERVICES COMMISSION

January 02, 2025 N:\Pincher-Creek-MD\Cowley\Cowley LUD & Land Use Redesignations\Cowley LUB 352 September 1998 (Amended to Bylaw 370).dwg